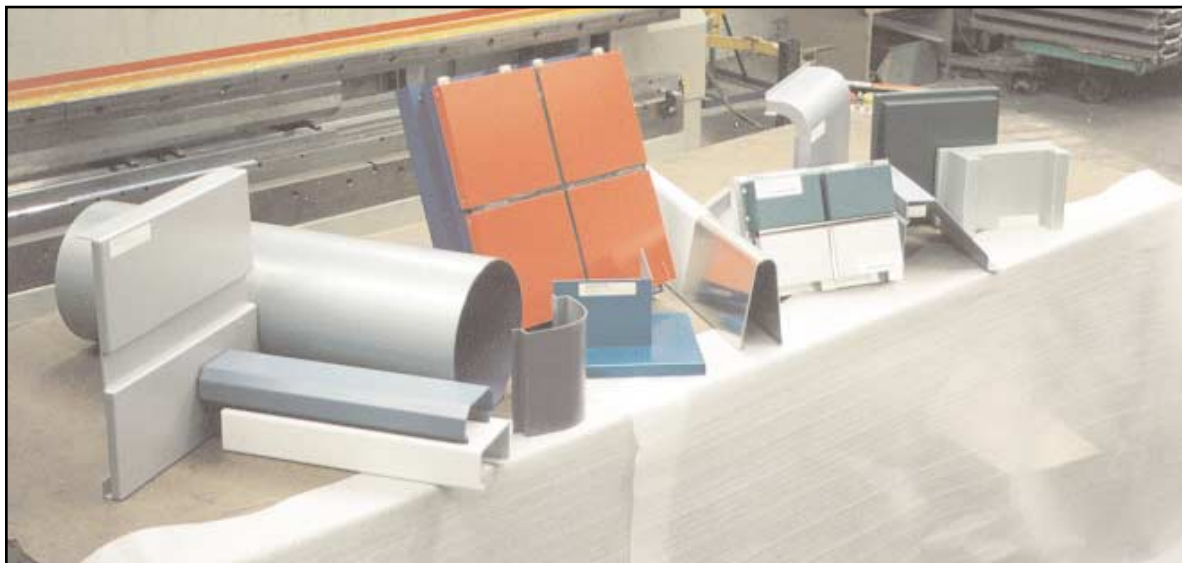


TECHNICAL DATA SHEET

KANALCO LTD.

ARCHITECTURAL METAL PRODUCTS

FORMED METAL PROFILES



DESCRIPTION

Kanalco Ltd. produce custom fabricated profile brakeshapes for a wide variety of architectural applications, and pre-finished in a variety of popular anodized and painted finishes.

Profiles are available in both aluminum and stainless steel. Exact manufacturing standards, architectural flatness and forming versatility lend themselves to a host of specialty shapes. Metal profiles are an ideal medium for imaginative and discriminating architects, builders, designers, engineers and owners.

Finishes:

Aluminum finishes offered include Architectural Class 1, 20 (um (.0007")) or Class 2, 10 (um (.0004")) in clear or standard anodized colors, and mill finish. Paint finishes offered include PPG Duranar® fluorocarbon coatings containing Kynar 500* resin in a wide range of architectural colors.

Stainless steel finishes offered are:

1. X-L Blend "S" (Excelsior) - for typical applications.
2. X-L Buff (AISI #8) - for a mirror-like appearance.
3. No. 4 (Excelsior) brushed finish.

Powder coated and other finishes are also available upon request.

Shapes:

Kanalco profiles are precisely formed with radiused corners, reverse curves, small radius curves, 90° angles, compound curves and other shapes as desired. Brake or roll forming (roller die) can produce an infinite variety of shapes.

Sizes:

Thickness- .051", .062", .080", .090", .100", .120", and .250".

Widths- as desired up to 60" (1524 mm)

Lengths- as desired up to 14'-0" (4.3 m)

EXAMPLE USES

- Parapet flashing
- Window sills
- Mullion covers
- Coping
- Accent bands
- Column covers
- Cladding
- Closure trim
- Light diffusers (see reverse).

FEATURES

Shop formed profiles; provides for enhanced quality manufacture to exact specifications at relatively low cost.



Versatile; forming possibilities permits innovative design at all budget levels.

Strong, rigid shapes; offers a degree of flatness for creating smooth surfaces without dimpling, buckling or oil canning.

Attractive; Kanalco formed profiles offer virtually limitless colors, shapes and sizes that blend beautifully with other materials.

Durability; Kanalco formed profiles provide resistance to weather, corrosion, fire, chalking, fade, humidity and wear.

Quick turnaround; Kanalco takes pride in their ability to deliver materials promptly and on time, even with accelerated construction schedules.

APPLICABLE STANDARDS

Kanalco metal fabrications conform to the following:

Aluminum:

- CAN/CGSB-93.1M
- Aluminum Association Designation System for Aluminum Finishes (clear or anodized).
- AAMA (Architectural Aluminum Manufacturer's Association) #605 test requirements for Duranar colored coatings "Voluntary Specification for High Performance Organic Coatings on Architectural Extrusions and Panels".

Stainless Steel:

- ASTM A240 for Type 304.
- CSA W59-1989 for corner or other type welds.



INSTALLATION

Methods:

Kanalco Ltd. are a custom manufacturer specializing in the metal fabrication field. Installation of Kanalco formed metal profile products is normally carried out by the appropriate trades and experienced installers according to specifications and approved shop drawings.

Precautions:

Eliminate drainage onto profiles from other materials, such as chloride bearing cements and other corrosive materials.

Fasteners should be concealed as much as possible for aesthetic reasons, and should have corrosion resistance equal to or better than the metal profile to eliminate later repairs. If possible always use stainless steel fasteners.

The designer's specifications should be made clear to all trades whose work adjoins metal profiles that suitable precautions against damage must be maintained.

AVAILABILITY & COST

Kanalco fabricated metal products can be shipped worldwide. Current cost data is available upon request.

WARRANTY

Normal one year construction warranty.

TECHNICAL SERVICES

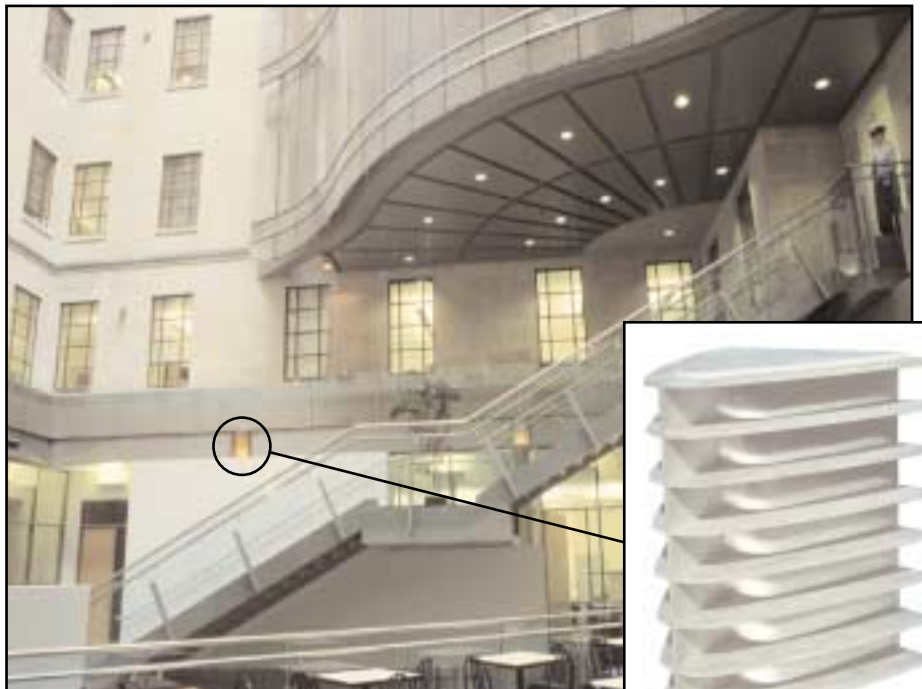
Kanalco Ltd. can provide consultation from preliminary design through to product application, including the following:

- Technical advice for both new work and retrofit applications
- Finish samples
- Specification assistance
- Shop drawings
- Recommending contractor sources
- Site advice and recommendations

RELATED DATA

Other literature available relating to Kanalco Ltd. products include:

- Aluminum Wall Panels
- Metal Column Covers
- Stainless Steel Wall Panels
- Reynobond Composite Panels
- Spandrel Back Panels
- Glazing Panels



KANALCO LTD.

ARCHITECTURAL METAL PRODUCTS

345 Lake Road, Bowmanville,
 Ontario, Canada, L1C 4P8
 1-800-268-8139
 Tel: (905)623-2303
 Fax: 888-779-9914